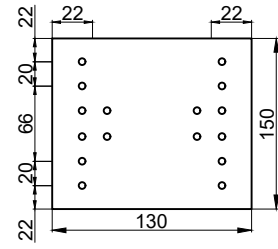
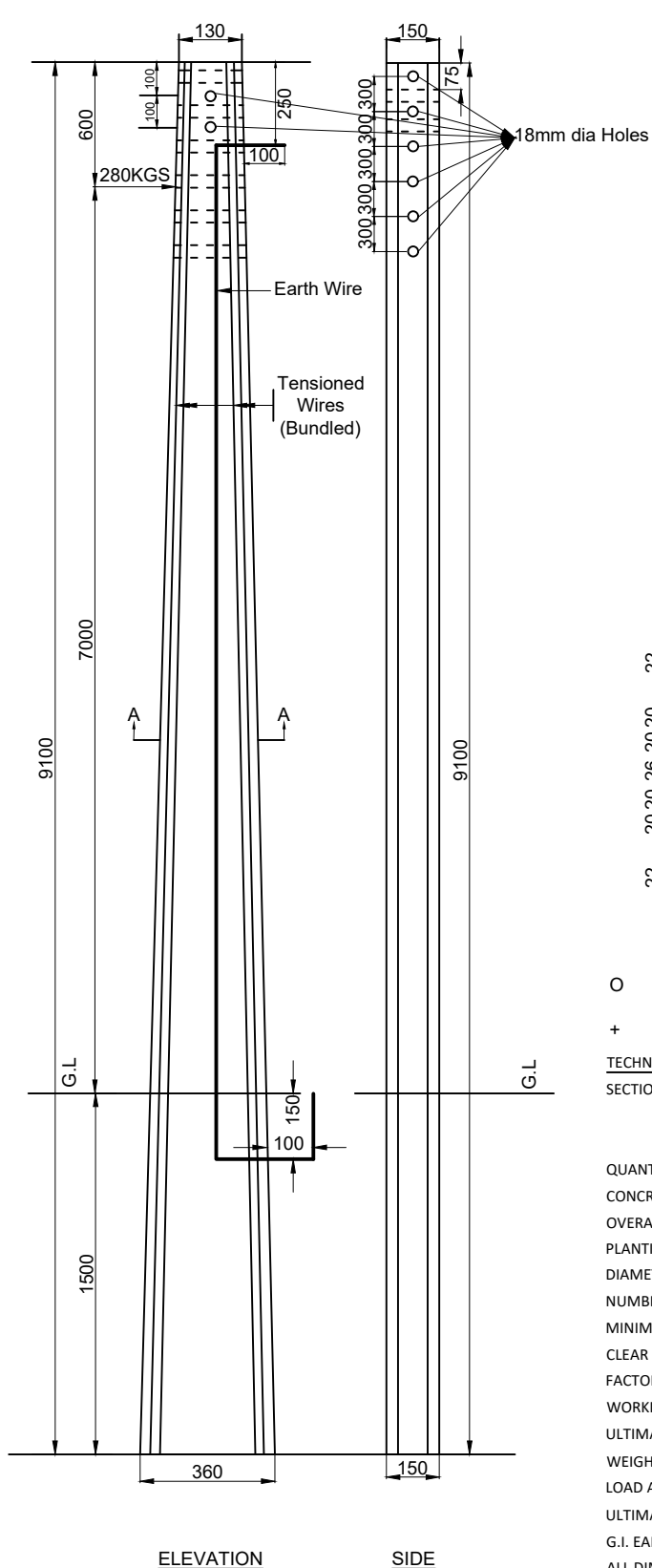
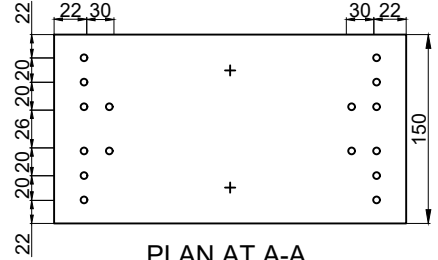


REINFORCEMENT DETAILS OF 9.1M/280KG

PRESTRESSED CEMENT CONCRETE POLES (FACTOR OF SAFETY = 2.0)



PLAN AT TOP



PLAN AT A-A



PLAN AT BOTTOM

- O Denotes Tensioned Wire
- + Possible Position of Earth Wire

TECHNICAL GUARANTEE PARTICULARS 9.1M/280kg WORKING LOAD SECTION:

A) TOP	: 130 X 150 mm
B) BOTTOM	: 360 X 150 mm
QUANTITY OF CONCRETE	: 0.334 m ³
CONCRETE GRADE	: M-40
OVERALL LENGTH SUPPORT	: 9.1 M
PLANTING DEPTH	: 1.5 M
DIAMETER OF PRESTRESSING WIRE	: 4 mm
NUMBER TENSIONED WIRE	: 16 Nos
MINIMUM CUBE STRENGTH OF CONCRETE AT 28 DAYS	: 400 Kg/cm ²
CLEAR COVER	: 20 mm
FACTORY OF SAFETY	: 2.0
WORKING LOAD	: 280 kg
ULTIMATE LOAD	: 560 kg
WEIGHT OF POLE (THEORETICAL)	: 870 kg
LOAD APPLICATION AT A POINT FROM THE TOP	: 600 mm
ULTIMATE TENSION STRENGTH FOR 4MM WIRE	: 17500 kg/cm ²
G.I. EARTH WIRE 8SWG	: 1 no
ALL DIMENSIONS ARE IN mm	NOT TO SCALE